

It's a fact.....

- ① The two basic kinds of texture are visual and tactile.
- ① When we locate the main point of interest slightly low and to the right of centre, the pattern our eyes tend to follow is a backward 'six' (⑥) pattern.
- ① A staccato pattern is more noticeable and may keep our attention longer than a regular one.
- ① One of the ways we show movement in art is to use repetition.
- ① Our eyes tend to follow the direction of a pattern.
- ① We create the feeling or rhythm in art by the use of patterns.
- ① Two of the ways we add unity to artwork are repetition and proportion.
- ① The kinds of balance we are using in a drawing of a running person who is leaning forward is asymmetrical balance.
- ① If we isolate one hue from the prismatic spectrum, for example green, and collect the remaining colours – red, orange, yellow, blue, violet with a lens, the mixed colour obtained will be red.
- ① Each spectral hue is the complement of the mixture of all the other spectral hues.

- ① A light grey square looks dark on a white background; the same light grey square looks light on a dark background.
- ① A white square appears to be larger than a same size black square.
- ① Two or more colours are mutually harmonious if their mixture yields neutral grey.
- ① If we stare at a medium grey square there is no after image and from this we can deduce that our brain seeks the equilibrium of middle grey.
- ① A gesture drawing is used to see how a subject will fit on the page.
- ① The four steps of drawing are to:
 - pick your tools,
 - make a gesture drawing,
 - make a shapes drawing,
 - and draw the details.

The more one draws, paints, and creates, the greater the danger of forgetting the basics. It is easy to forget why some things work and others do not. To get caught up in techniques of rendering and miss the over-all effect. It is hoped the 'facts' listed above will be useful in improving your focus. Thinking about one or the other 'fact' can serve as a springboard to improving visual ideas, and even generating new ones.

VALE

It is with regret we announce the loss of partners of two members. Nancy Menetrey's husband died last March 23 at Lilli Pilli, Bateman's Bay. Alisdair Steel of Kareela lost his wife about six weeks ago. Sympathy cards have been sent; better late than not at all.

Be sure to let the Society know of major life changes, and major sicknesses, as we do like to acknowledge these things.

It is great to report on the good, nay, great, vibes at Society meetings. The enthusiasm does feed on itself creating a spirit of kinship among like souls.

This leads me to quote Gerard Willems, classical pianist.

"The pianist needs to analyse the music, but it is also crucial to 'express the emotion' in what is written. It is really like taking your clothes off in public. You cannot hide under a musical score. **If you feel buoyant you play in a buoyant sort of way.** If you feel noble, if you feel proud - all those things.

Our forward scout, Clancy, found his way to Lithgow last month to check out the talent at Ironfest.

There is definitely room for some of the good stuff from St. George but it would take a major effort by members if we were to have a go among the cattle dogs.

Have a look at Clancy's 'A Trip To Lithgow' on the Society's web site.

If you have ever wondered how you could make your artwork more beautiful then you are not alone. After decades of chic postmodernist cynicism, core values in art and aesthetics are returning.

Questions like 'What is Beauty? Why is it important? And why isn't there more of it around? These sorts of humane and serious questions are, at last, getting more attention.

If you are intrigued, you could find out more by spending \$53 on a new book by John Armstrong, associate professor of philosophy at Melbourne University.

It is not enough to paint, you have to paint beautifully. And that requires thoughtfulness.



St. George Art Society Incorporated

President	Don Kibble	9547 2237 042 747 2237 (text)
Secretary	Jillian Jessen	9546 6992
Treasurer	Lorraine Sweeny	9546 1162
Demonstrators	Jillian Jessen	9546 6992
Honorary Auditor	Graham Hall	C.P.A.
Web Master	Phil McKay	



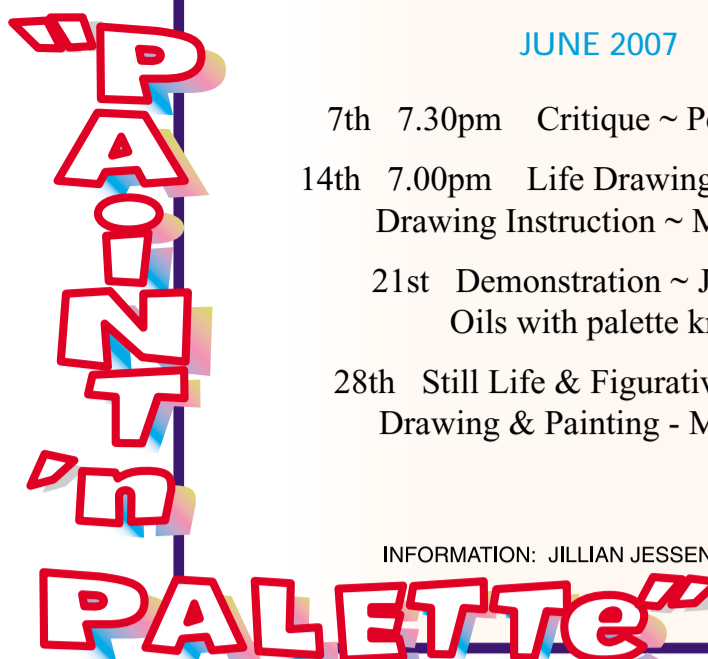
www.stgeorgeartsociety.com.au

JUNE 2007

- 7th 7.30pm Critique ~ Peter Whelan
- 14th 7.00pm Life Drawing ~ Lower Hall
Drawing Instruction ~ Main Hall
- 21st Demonstration ~ Jim Flood
Oils with palette knife
- 28th Still Life & Figurative Art Study
Drawing & Painting - Main Hall

INFORMATION: JILLIAN JESSEN Ph 9546 6992

No. 276



A touch of light

shone on our recent exhibition at the library. It would have been better with a big spotlight and lots more people. But not to worry. Those that were there reacted well to the mayor's expressions of support for the Society's activities. Four paintings were sold and a commission received on the night, plus we get a lot of regular attention from the passing parade of library patrons. This month's activities will be exciting with Jim Flood wielding his famous palette knife and the weekend of workshops by John

Wilson mostly booked out. All of which should make for an interesting critique in July as members try out a few new skills. You will notice two advertisements in the newsletter this month so it is a great time to replenish your supplies or invest in materials for untried artistic techniques. And speaking of noticing, don't forget to notice when your library borrowings are due back. The best practice is to do all your library borrowings and returns at the same time, either demo night or critic night.

SOCIETY MEMBERS

GENEROUS DISCOUNTS



Framing

and all kinds of art supplies & advice for the serious artist

open



days

Unit 4/405-411 West Botany Street (off Lindsay St), Rockdale 2216
Phone 9567 2355 Fax 9567 8535
visualart@timeout4me.com.au www.timeout4me.com.au

Art Tuititon available from SGAS members

- Don Kibble** Ramsgate Life Saving Hall, Ramsgate Beach
Phone Don 9547 2237 Wednesday 10am to noon \$20
- Myrle King** Rockdale Tennis Club, 71 Chapel St. Rockdale
Phone Myrle 9587 5609 Wednesday 10am \$10
- Ros Psakis** Kogarah Bay Progress Hall, Park Rd. Kogarah Bay
Phone Ros 9587 8857 Wednesday 10am to 2.30pm \$20
- Yvonne Ferguson** Home Studio, 130 The Promenade, Sans Souci
Phone Yvonne 9529 5536
Monday & Wednesday 6.30 to 9pm \$20
- Friends Painting Group (no tuition)**
- Pat Buckeridge** Rockdale Tennis Club, 71 Chapel St. Rockdale
Phone Pat 9529 7727 Wednesday 9.30am to 3.30pm \$2

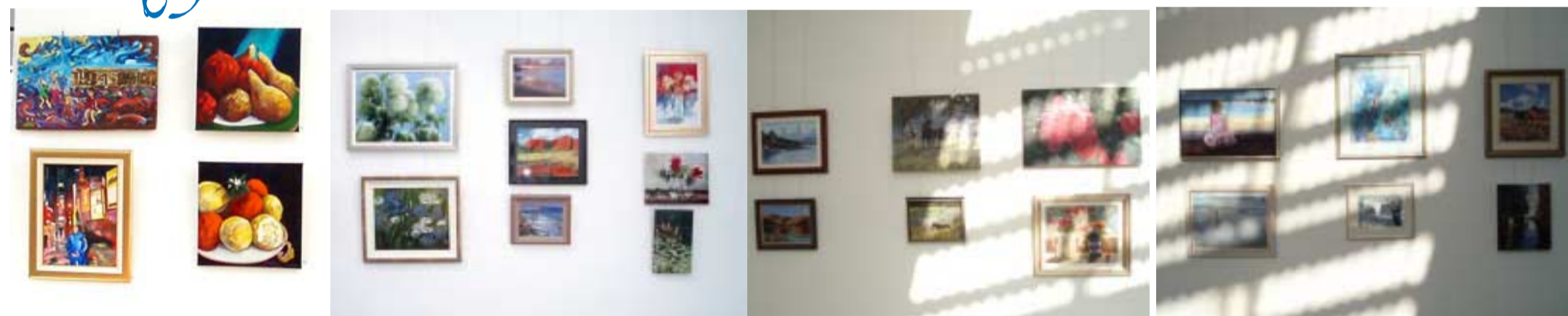
Paint n Palette can be posted to your address...just send post-stamped, self addressed 'DL' envelopes -one for each month- to:

Paint n Palette : St. George Art Society PO Box 123 Kogarah NSW 1485

The Kogarah School of Arts pay phone no. is 9588 6724.

Gallery 63

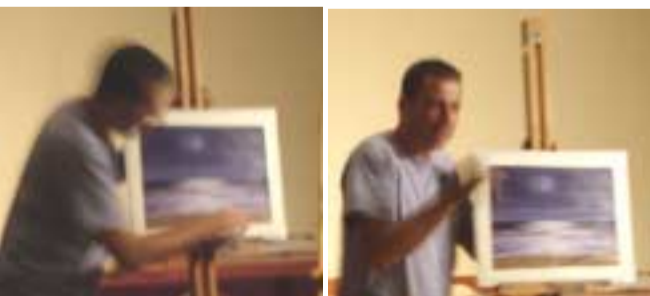
A Touch of Light



The exhibition was opened on May 11 in the Cultural Centre at Kogarah Central Library by the Mayor, Councillor Michael Kitmiridis. Art Society President Don Kibble thanked the Mayor, Library manager David Mitchell, and his staff for their interest and support in setting up the exhibition and the Society in general. Several paintings and objects 'd art were sold during the evening. This effort has been an exercise in testing our ability to increase the professionalism of our presentations and will be put to good use in the future.



Be sure to check www.stgeorgeartsociety.com.au to see these and other activity views in full colour including images and story 'A Trip To Lithgow'



Paul McCarthy expounds...

With verve and veracity a record number of members' artworks got a critical going over from the colour master.



Artwork of the Month (Jan Callus) under discussion (below)



Advertising for Lenny & Joes



THE ART SCENE
winter sale 2007
June and July

huge savings on selected Arches, Winsor & Newton, Matisse, Saunders Waterford and Art Basics products
25% off the full range of brushes
save even more when you buy in bulk

914 Victoria Road
West Ryde NSW 2114
Tel: 02 9807 6900
Fax: 02 98096548

email: sales@artscene.com.au
web: www.artscene.com.au

THE LARGEST RANGE OF ART SUPPLIES AND MATERIALS AVAILABLE UNDER ONE ROOF WITH OVER 7000 PRODUCT LINES